

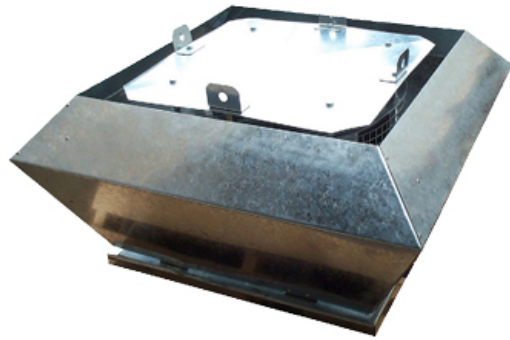
## Roof Mounted Centrifugal Fans

### Roof Mounted Centrifugal Fans – Square Curb

**Manufacturer: CFM Fans**  
**Model: MCV / MCH Series**



MCV310 – 560



MCV630 & 710



MCH355



MCH150 - 250



MCH310 Plastic Option

The MCV (Vertical Discharge) and MCH (Horizontal Discharge) series of Direct Drive Roof Mounted Centrifugal Fans are supplied with the same relatively sized backward curved centrifugal impeller and external rotor motor as the MUC inline centrifugal units regardless of airflow orientation. The cowl form is the only deviation. Vertical units have a circular discharge metal cowl from 310mm diameter up to 560mm diameter, whilst the 630mm and 710mm diameter units have a more angular fabricated metal cowl. Horizontal units range from 150mm impeller diameter to 355mm diameter with a metal cowl. The 310mm diameter unit can be supplied with a plastic cowl on request.

CFM Fans source their impellers from reputable manufacturers such as Ziehl-Abegg, EBM Papst and others. Available in eight sizes from 310mm diameter to 710mm diameter and in either three phase or single phase models.

Most three phase external rotor motor models are supplied with 2 speed Star (Y) / Delta ( $\Delta$ ) motors as standard. Configured as:

4/6 pole whereby Delta  $\Delta$  = 4 pole & Star Y = 6 pole

or

6/8 pole whereby Delta  $\Delta$  = 6 pole & Star Y = 8 pole

A Star/Delta switch is available as an optional extra should switching be required

#### Performance Summary:

*Performance summary tables should be used as a broad indication of the actual fan capabilities. Please refer to the individual fan curves for specific performance and noise data, available in the CFM Fan Selector Program [Download Fan Selector]*

#### MCV

Size	RPM	Airflow	Pressure	Motor		SPL (Avg)
		l/sec (max)	Pa (max)	kW	Amps	dB(A) @3m
310	1400	600	280	0.18	0.8	49
355	1400	800	350	0.28	1.25	52
	960	550	150	0.11	0.49	42
400	1400	1200	430	0.43	1.9	47
	960	800	190	0.17	0.76	40
450	1400	1580	550	0.62	2.8	48
	960	1120	250	0.25	1.1	40
500	1400	2380	700	1.3	5.8	53
	960	1500	300	0.4	1.65	46
	720	1160	250	0.25	0.5	39
560	1400	3190	800	1.7	3.3	50
	960	2220	360	0.7	3	45
	720	1520	250	0.33	0.55	41
630	1400	4720	1100	3.9	6.6	56
	960	4150	850	2.8	4.6	46
	720	2500	350	0.65	1.2	39
710	960	4400	580	2	3.9	57
	720	3750	475	1.4	2.5	52

#### Specification:

- Performance tests carried out in accordance with BS848 Part 1 (1980) and DIN 24163
- Noise level tests carried out in accordance with BS848 Part 2 (1985) and DIN 45635 Part 38
- Fully weatherproof Galvanised Steel Housing
- Sealed for life ball bearing motors
- Motors available in single or three phase, 2 speed and / or speed controllable
- Cowls can be provided powder-coated as an optional extra if required
- All metal construction is available on request to satisfy AS/NZS1668.1:1998 for Kitchen Exhaust Fan Casings and Cowls

**MCH**

Size	RPM	Airflow	Pressure	Motor		SPL (Avg)
		l/sec (max)	Pa (max)	kW	Amps	dB(A) @3m
150	2630	150	340	0.079	0.33	51
190	2630	150	340	0.079	0.33	51
225	2580	320	530	0.144	0.65	54
	1440	180	170	0.04	0.17	40
250	2580	360	550	0.183	0.8	57
	1440	260	180	0.08	0.34	40
310	1400	470	250	0.123	0.55	49
355	1400	770	350	0.28	1.25	52

Specification:

- As above

## Roof Mounted Centrifugal Fans – Round Spigot



**Manufacturer: CFM Fans**  
**Model: MVR / MCR / MCK Series**

The MVR (Vertical Discharge) and MCR (Horizontal Discharge) and MCK (Through Roof Kit) series of roof mounted centrifugal fans are supplied with a round spigot base for connection to circular duct. Available in single phase supply only. Vertical units have a circular discharge metal cowl from 250mm diameter up to 305mm diameter, whilst the horizontal units range from 150mm to 250mm diameter. The Through Roof Kit MCK model, as with the MCR-KIT and axial MAK versions, are supplied with 600mm of tube and Decitite base to suit metal roof profiles.

### Performance Summary:

*Performance summary tables should be used as a broad indication of the actual fan capabilities. Please refer to the individual fan curves for specific performance and noise data, available in the CFM Fan Selector Program [Download Fan Selector]*

#### MCR

Size	RPM	Airflow	Pressure	Motor		SPL (Avg)
		l/sec (max)	Pa (max)	kW	Amps	dB(A) @3m
150	2630	150	340	0.079	0.33	51
190	2630	150	340	0.079	0.33	51
225	2580	320	530	0.144	0.65	54
	1440	180	170	0.04	0.17	40
250	2580	360	550	0.183	0.8	57
	1440	260	180	0.08	0.34	40

#### MCK

Size	RPM	Airflow	Pressure	Motor		SPL (Avg)
		l/sec (max)	Pa (max)	kW	Amps	dB(A) @3m
150	2630	150	340	0.079	0.33	51

#### MVR

Size	RPM	Airflow	Pressure	Motor		SPL (Avg)
		l/sec (max)	Pa (max)	kW	Amps	dB(A) @3m

250	1400	570	280	0.18	0.52	49
305	1400	770	350	0.155	0.83	52

Specification:

- Performance tests carried out in accordance with BS848 Part 1 (1980)
- Noise level tests carried out in accordance with BS848 Part 2 (1985)
- Fully weatherproof Galvanised Steel Housing
- Sealed for life ball bearing motors
- Motors available in single phase only (speed controllable)
- Cowls can be provided powder-coated as an optional extra if required

## Roof Mounted Centrifugal Fans



**Manufacturer: CFM Fans**

**Model: MUCR Series**

The MUCR series of Roof Mounted Fans have the basic construction of the Inline Box Centrifugal Fan MUC range, with an added galvanised steel cowl and square foot curb for mounting. The fans can be orientated in either direction to form a Horizontal Exhaust Fan or a Supply Air Fan capable of medium airflow against medium to high static pressures. Characteristics of these Fans are as per the Inline MUC Fans and the MCV units as they are supplied with the same relatively sized backward curved centrifugal impeller and external rotor motor. They can be supplied in three phase or single phase units from 310mm diameter up to 630mm diameter.

Most three-phase external rotor motor models are supplied with 2 speed Star (Y) / Delta ( $\Delta$ ) motors as standard.

### Performance Summary:

*Performance summary tables should be used as a broad indication of the actual fan capabilities. Please refer to the individual fan curves for specific performance and noise data, available in the CFM Fan Selector Program [Download Fan Selector]*

#### MUCR

Size	RPM	Airflow	Pressure	Motor		SPL (Avg)
		l/sec (max)	Pa (max)	kW	Amps	dB(A) @3m
310	1400	600	280	0.18	0.8	49
355	1400	800	350	0.28	1.25	52
	960	550	150	0.11	0.49	42
400	1400	1200	430	0.43	1.9	47
	960	800	190	0.17	0.76	40
450	1400	1580	550	0.62	2.8	48
	960	1120	250	0.25	1.1	40

500	1400	2380	700	1.3	5.8	53
	960	1500	300	0.4	1.65	46
	720	1160	250	0.25	0.5	39
560	1400	3190	800	1.7	3.3	50
	960	2220	360	0.7	3	45
	720	1520	250	0.33	0.55	41
630	1400	4720	1100	3.9	6.6	56
	960	4150	850	2.8	4.6	46
	720	2500	350	0.65	1.2	39

Specification:

- Performance tests carried out in accordance with BS848 Part 1 (1980) and DIN 24163
- Noise level tests carried out in accordance with BS848 Part 2 (1985) and DIN 45635 Part 38
- Capable of handling medium to high static pressures
- Fully weatherproof Galvanised Steel Housing
- Sealed for life ball bearing motors
- Motors available in single or three phase, 2 speed and / or speed controllable
- Cowls can be provided powder-coated as an optional extra if required
- All metal construction is available on request to satisfy AS/NZS1668.1:1998 for Kitchen Exhaust Fan Casings and Cowls

## Mini Roof Fans



**Manufacturer: ELICENT**  
**Model: MRF Series**

MRF series Roof Mounted Centrifugal Fans are a versatile and robust range of centrifugal roof extract units available in 7 sizes and suitable for roof (vertical) and exterior wall (horizontal) installation for free or ducted exhausting. The protection cowl is supplied in highly resistant natural aluminium and is perfectly adapted for exposed areas, especially coastal ones and can be powder-coated as an optional extra if necessary. MRF compact design and easy installation is made to satisfy the requirements of efficient ventilation in residential, commercial and light industrial applications. These units are also available in a Low Wattage version to help with energy saving initiatives. Available in seven sizes as below:

Performance Summary:

### MRF

Size	Airflow	Pressure	Motor	SPL (Avg)
	l/sec (max)	Pa (max)	kW	dB(A) @3m
100	86	386	0.074	52
125	100	337	0.075	52
150	156	427	0.08	52
160	197	462	0.116	54
200	240	631	0.2	55
250	258	650	0.203	51
315	403	807	0.336	55

Specification:

- Comply with European Low Voltage Directives
- Manufactured in galvanised steel with stainless steel screws and highly resistant aluminium cowl
- Backward curved blades to ensure lowest sound levels and develop ample static pressure



- Cowl is removable for access to motor and impeller
- High efficiency, quiet and vibration free operation - IPX5
- Variable speed controllable for economical airflow
- Ideal solution for centralised / multi-point ventilation systems
- Ball bearing motor, permanently lubricated for maintenance free continuous running
- Square base curb available as an optional extra